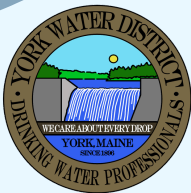


2024
PUBLIC WATER SUPPLY
WATERSHED PROTECTION
AREA RULES OF USE

York Water District
Kittery Water District



YORK WATER DISTRICT
86 WOODBRIDGE RD
YORK, MAINE 03909
207-363-2265
www.yorkwaterdistrict.org



YORK POLICE DEPARTMENT
9 HANNAFORD DR
YORK, MAINE 03909
207-363-4444
www.yorkpolice.org



KITTEY WATER DISTRICT
17 STATE RD
KITTEY, MAINE 03904
207-439-1128
www.kitterywater.org

CONTACT US:
watershed@yorkwaterdistrict.org

RULES OF USE

PET OWNERS

The water districts allow pets on these private lands. All pets must be on a leash at ALL times.

You must carry waste disposal bags. All pet waste must be bagged and taken with you, DO NOT leave bags on the side of trails.

Pet owners must obey the Town of York's Animal Control Ordinance. Failure to comply with the ordinance will be grounds for being asked to immediately leave the watershed.

VIOLATIONS WILL RESULT IN
SUMMONS TO APPEAR IN COURT.

ATV USE

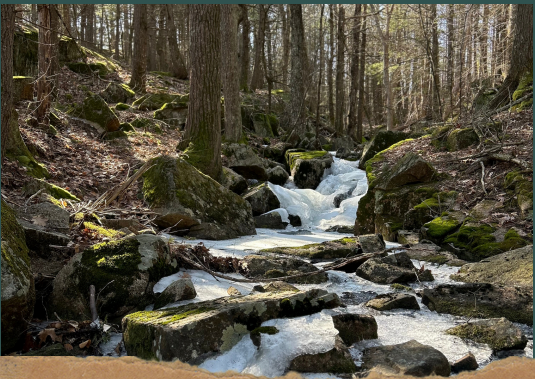
ATV use is allowed on the water districts private property.

ATV use is by permit only. PERMITS ARE AVAILABLE TO RESIDENTS OF YORK, KITTERY, & ELIOT

The maximum speed on all trails is 15 M.P.H.

ATV permit applications can be applied for online at www.yorkwaterdistrict.org/online-atv-permit or scanning the QR code with your phone camera.





RULES OF USE

No contact of ANY KIND
with water sources.

Stay on open and marked trails.

Tier 1 & 2 E-bikes are allowed,
while Tier 3 & 4 E-bikes are prohibited.

Dirt bikes or highway capable
vehicles are prohibited.

No camping.

No fires of any kind at any time.

No tree/brush cutting or
trail manipulation.

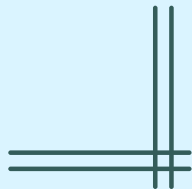
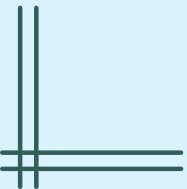
No littering, carry out what you carry in.

ANY VIOLATIONS OR MISUSE WILL
RESULT IN BEING ASKED TO LEAVE OR
SUMMONS TO APPEAR IN COURT



About Us

York Water District and Kittery Water District provide public water for the towns of York, Kittery, Eliot, and the Portsmouth Naval Shipyard. Activity that happens in the watersheds affect the quality of the water supply and water treatment process. Both water districts cooperate to actively manage the watersheds and complete timber harvests to keep a healthy and vigorous ecosystem around the ponds. This helps reduce erosion and maintains a healthy balance of nutrients which keeps algae blooms in check. You can help our efforts by following the recreational rules while visiting, so we can continue to provide the best quality water for our communities, as well as countless seasonal visitors to the region.





RULES OF USE

No rock climbing or rappelling.

No organized activities without authorization from the York Water District or Kittery Water District.

Hunting is allowed during open seasons.
Tree stands AND observation stands
are NOT allowed.

The possession or consumption of alcohol
is strictly prohibited.

Read and obey all signs and rules.

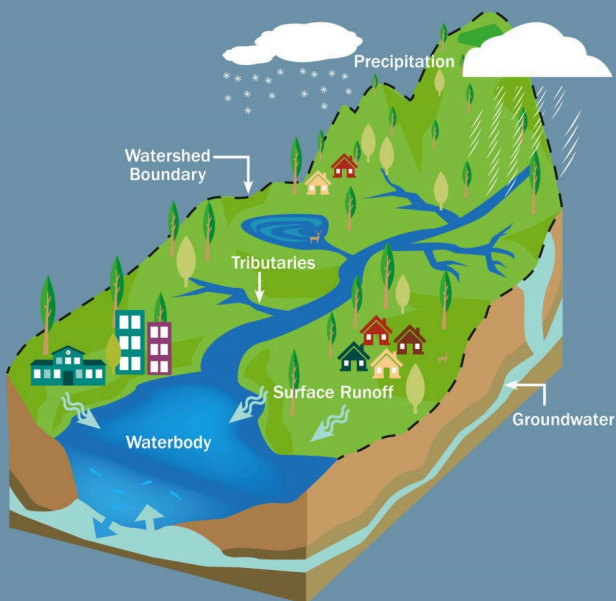
Drone use is by permission only.

No metal detecting or disturbing land.

**ANY VIOLATIONS OR MISUSE WILL RESULT IN
BEING ASKED TO LEAVE OR SUMMONS TO
APPEAR IN COURT**

What is a watershed?

A watershed is the area of land where all of the water that is under or drains off of it goes into the same place.

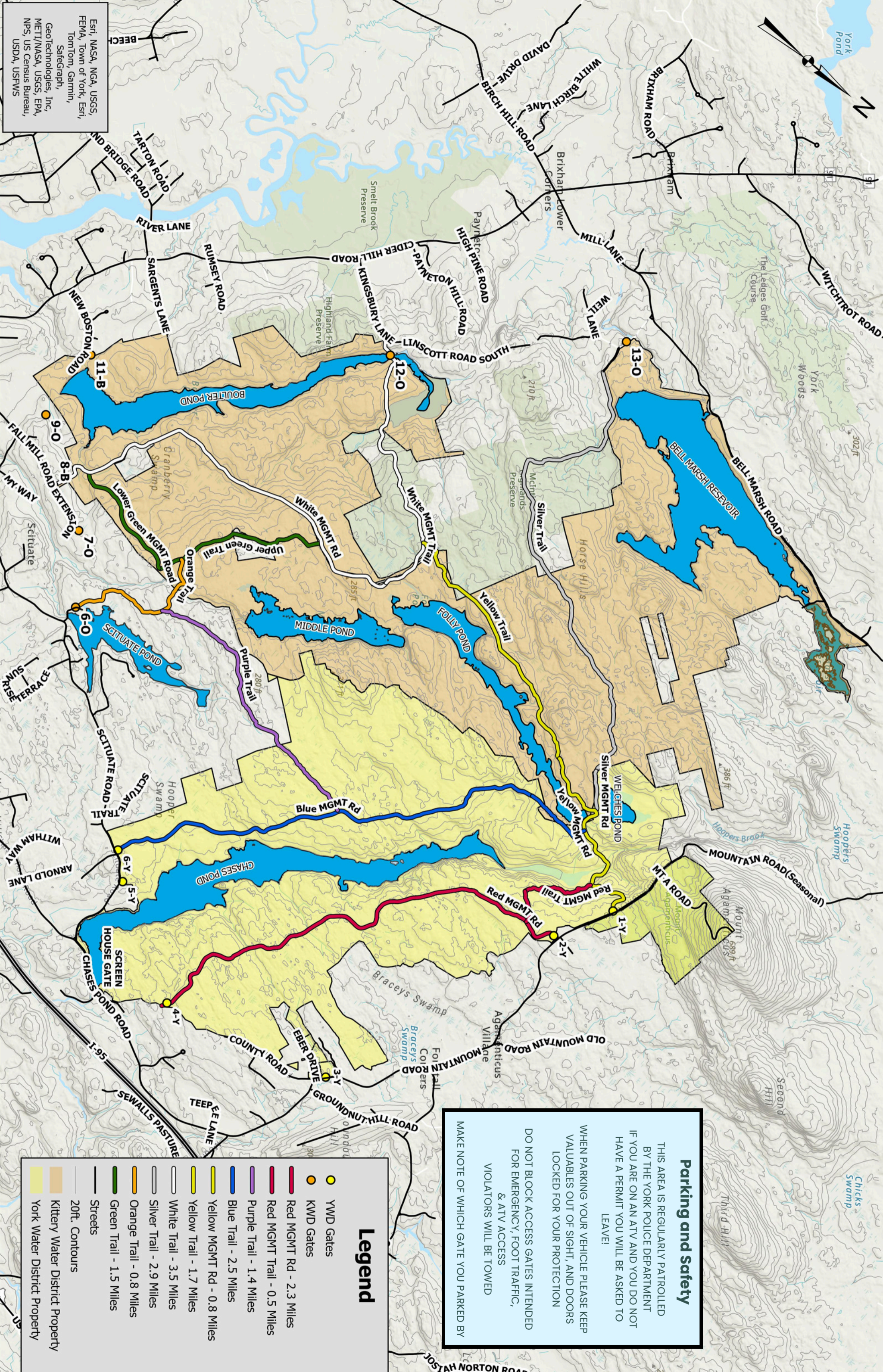


Greenscapes North Shore Coalition

The protection of drinking water sources is a crucial part of the water district's function as more emerging contaminants appear in drinking water sources across the nation and viable water sources become limited. With more stringent testing requirements from the EPA (Environmental Protection Agency) and the State of Maine Drinking Water Program, the district's combined goal is always to exceed the requirements and have the best raw water quality possible to achieve a better finished product. We achieve this by regulating the recreational use of our land in the watersheds.

Although the land is privately owned and maintained, the districts provide access to the public for them to enjoy the minimal impact recreational opportunities the land has to offer.

Esri, NASA, NGA, USGS, FEMA, Town of York, Esri, TomTom, Garmin, SafeGraph, GeoTechnologies, Inc, METI/NASA, USGS, EPA, NPS, US Census Bureau, USDA, USFWS



Parking and Safety

THIS AREA IS REGULARLY PATROLLED BY THE YORK POLICE DEPARTMENT. IF YOU ARE ON AN ATV AND YOU DO NOT HAVE A PERMIT YOU WILL BE ASKED TO LEAVE!

WHEN PARKING YOUR VEHICLE PLEASE KEEP VALUABLES OUT OF SIGHT, AND DOORS LOCKED FOR YOUR PROTECTION

DO NOT BLOCK ACCESS GATES INTENDED FOR EMERGENCY, FOOT TRAFFIC, & ATV ACCESS. VIOLATORS WILL BE TOWED

MAKE NOTE OF WHICH GATE YOU PARKED BY

Legend

- YWD Gates
- KWD Gates
- Red MGMT Rd - 2.3 Miles
- Red MGMT Trail - 0.5 Miles
- Purple Trail - 1.4 Miles
- Blue Trail - 2.5 Miles
- Yellow MGMT Rd - 0.8 Miles
- Yellow Trail - 1.7 Miles
- White Trail - 3.5 Miles
- Silver Trail - 2.9 Miles
- Orange Trail - 0.8 Miles
- Green Trail - 1.5 Miles
- Streets
- 20ft. Contours
- Kittery Water District Property
- York Water District Property